

Accela's Fall 2019 Product Release

Enhanced Usability, Higher Performance and Deeper Insights

The Fall 2019 Release is the result of significant input from our customers and partners, and incorporates our vision and strategic direction for the Civic Platform, Civic Applications, and products used to build high-value solutions.

Products included in the Fall 2019 Release:

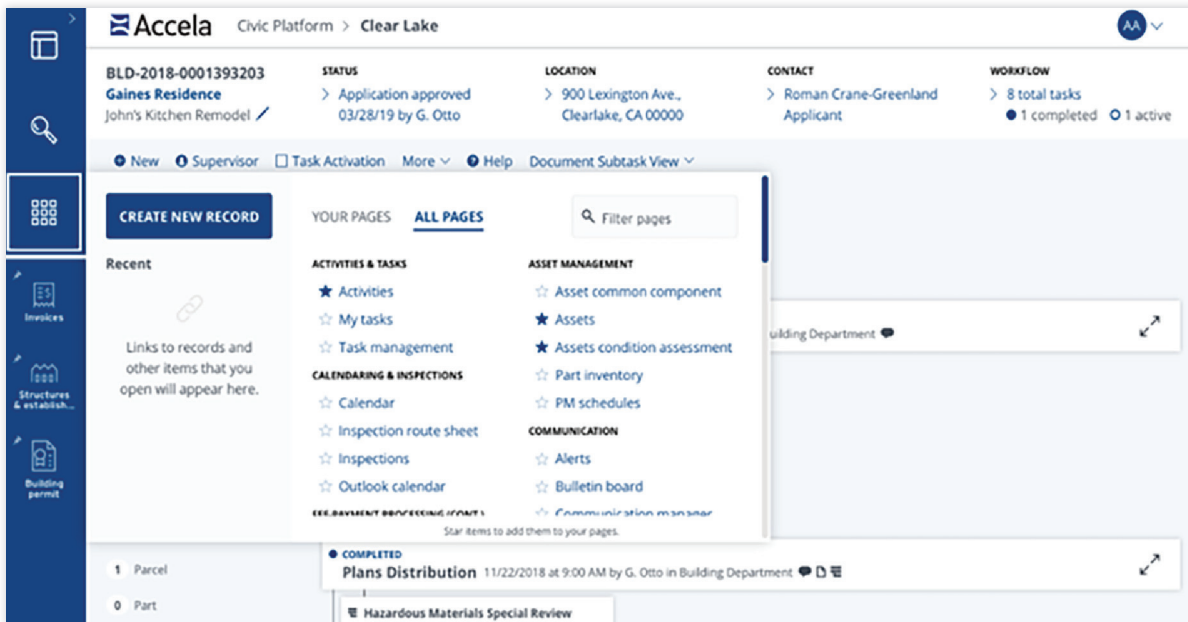
- > Civic Platform V19.2
- > Accela Citizen Access V19.2
- > Accela Mobile V19.2
- > Accela GIS V19.2
- > Civic Application for Business Licensing V1
- > Civic Application for Alcoholic Beverage Control V1
- > Civic Application for Environmental Health V2
- > Civic Application for Building V3
- > Civic Application for Planning V3

Civic Platform V19.2

This new release of the Civic Platform improves back office ease-of-use and convenience.

- > New **launch pad** for easier and more intuitive navigation to frequently used pages
- > Default **start page** which creates a consistent starting point as users log in, and makes starting point navigation easier and more convenient
- > Enhanced **forms designer**, with over 250 of the most commonly used forms, utilizes Angular technology for forms that are faster to design and provide better performance
- > The Civic Platform receives a **separate spaces** enhancement which makes it easy for users to multi-task across various projects
- > New **enhanced logging** of data for better system supportability, management and performance
- > Rebuilt **batch engine** (Quartz 2.0) offers increased performance and usability for batch job processing
- > Additional support for SSRS 17 and Crystal 2016 Enterprise to ensure higher degrees of data analytics and insight

Powered by Microsoft Azure as our primary hosting environment, Accela offers users single sign-on with integration to Azure Active Directory and incorporates Microsoft's Power BI as a reporting option for our SaaS customers.



New "launch pad" with the Civic Platform Version 19.2

Civic Platform V19.2 for SaaS

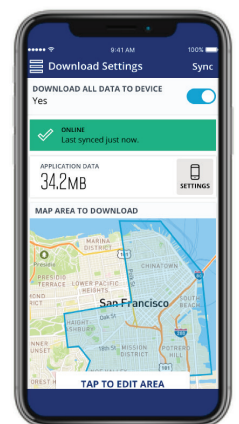
For our SaaS customers, we are offering several new capabilities within our hosted infrastructures.

- Single sign-on, with pre-built integrations to Azure Active Directory and Okta, makes it more convenient for end users to work across multiple applications, and includes additional APIs for other IDP systems
- Enhanced Reporting Database (ERD) to ensure customers get the most out of their data with near real-time replication of transaction data into a read-only database for reporting. Enables customers to perform any reporting they want with their tool of choice, with no impact to their transaction systems. Optional feature for SaaS/Azure customers only
- Power BI Reporting option for increased flexibility and capabilities with data reporting and visualization. Expands current reporting options supported in our Azure environment to Accela's Ad Hoc reporting, Crystal Reports, SSRS, and now Power BI

Accela Mobile V19.2

The new version of Accela Mobile is focused on the migration of Accela's various mobile products to a single product. The new features in V19.2 apply to Accela Mobile only.

- Offline storage capabilities with in-app caching to allow mobile users to download job lists, records, documents, contacts, forms, tables and workflows for higher productivity in the field
- Enhanced GIS interaction from a mobile device, allowing users to create and edit maps from their devices, ensuring they get the full benefit of GIS data



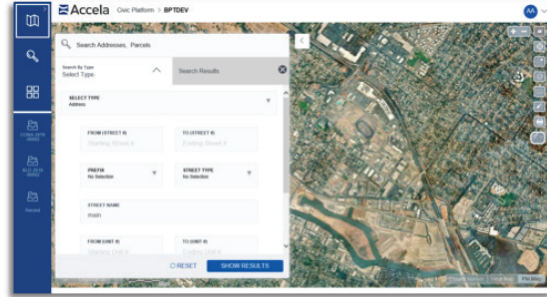
Accela Mobile V19.2

Accela Citizen Access V19.2

- Improved **XAPO data**, so location-based services and data are more easily pulled from external sources such as an assessor’s office, GIS system, or other. This enhances the user’s experience by pre-filling broader location data for applicants once the address has been inserted, saving time and effort in filling out forms
- A new **custom wrappers** capability enables self-publishing of citizen-facing UIs to improve the speed of deployment and overall branding capabilities for agencies
- The new **condition of approvals** feature increases the visibility for citizens into process steps completed, and what is still needed for approvals or to conclude a transaction or interaction
- Enhanced delegation for our superagency users provides a much better experience when setting up cross jurisdiction delegations within processes



Accela Citizen Access V19.2



Accela GIS V19.2

Accela GIS V19.2

- Enhanced **geo coding**, to extend and expand the property data available to users. Provides easy integration to geo-coding services such as ARC GIS Online to download additional property detail, including x and y coordinates, to improve the data available and overall productivity for users
- Stacked **parcel identifier** for improved property detail and usability. Provides higher precision of property detail when there are multiple addresses or parcel numbers within one physical location such as a building
- Exporting of GIS assets via CSV to make it easier to manage GIS information. Users can select a group of parcels and export the data associated with those parcels into a CSV file for use in Excel or other systems that import CSV
- Overall usability enhancements across our GIS technology to improve the overall user experience and productivity

Accela Civic Applications streamline core agency functions

Civic Applications

The Fall 2019 Release introduces two new Civic Applications, and provides new versions for three existing Civic Applications.

Civic Applications are pre-built solutions which sit on the Civic Platform and provide out-of-the-box functionality for specific functions. They are fully tested and ensure our customers know exactly what they will have at the end of a solution discovery, design and implementation process.

Having these pre-built capabilities can shorten the time and lower the cost for a solution implementation, and include domain specific capabilities we’ve gained from thousands of implementations to help our customers define the best process flows for their needs.

Civic Applications in the Fall 2019 Release:

- > Business Licensing V1
- > Alcoholic Beverage Control V1
- > Building and Planning V3
- > Environmental Health V2

NEW Civic Application for Business Licensing V1

- > Includes 34 record types applicable for business licensing functions, including Amusement, Animal Services, Business, Mobile Vendor, Parking, Temporary, and Transportation licenses
- > The release also facilitates licensing of emerging regulation areas such as ride sharing, scooter rentals, and home-based businesses
- > Provides all core functions out-of-the-box, including online application, online payment, field inspection, and enforcement actions

NEW Civic Application for Alcoholic Beverage Control V1

- > Includes 31 new record types for ABC control processes and business types, such as on-premises, off-premises, package retail, and temporary events
- > Also supports local-production businesses with record types for brewery, winery, and distillery businesses
- > Includes server, manager, and caterer record types for serving alcohol
- > Includes all core functionality needed, along with complaint and violation record types for strong enforcement activity

Civic Application for Environmental Health V2

- > Adds these functions to the 39 record types currently offered in V1:
 - Hazmat
 - Time Accounting
 - Change of Ownership of Facility (amendment record type)
 - Temporary Events
- > Includes a new workflow for enforcement for cases and violations
- > Database mapping to facilitate Envision Connect migrations

Civic Application for Building V3

- > Adds enhancements to the current version, such as separate fee schedules for each record type and document groups
- > New features include global filters, condition management, inspection calendaring and scheduling, and enforcement automation
- > Specific permit (record) types added include:
 - Change of Scope - when actual construction deviates from approved plans
 - Public Records Exemption
 - Tiny Homes

Civic Application for Planning V3

- > Includes pre-built global filters, pre-built condition management, and pre-configured inspection calendar
- > New record types include record automation, enforcement automation, and inspection scheduling

Code Enforcement V3 Across All Civic Applications

Accela's Code Enforcement functionality is not a separate standalone Civic Application but is now a set of pre-built capabilities included with all Civic Applications. There is no extra charge for this capability within each of our Civic Applications.

Code Enforcement V3

- > The new Code Enforcement functionality offers additional complaint, violation, and case types including property maintenance project, which come pre-built in our products
- > Includes new automation, enforcement automation and inspection scheduling

For More Information

To learn more about Accela's new Fall 2019 product release, please contact your account executive, reach us at Sales@accela.com, or visit our website at www.accela.com/latestrelease.